

www.daovay.com



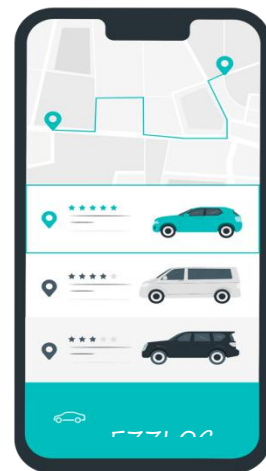
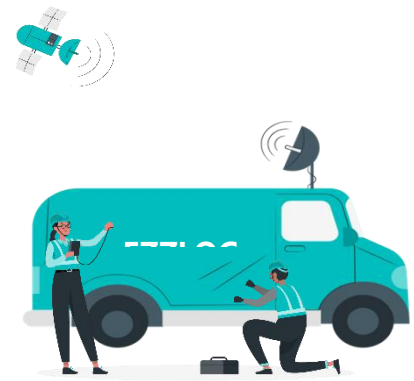
WL 2

GPS Tracker

深圳市到位科技有限公司
SHENZHEN DAOVAY TECHNOLOGY CO., LTD

Product Feature

- A. No-plug charging, no wiring
- B. Beidou+GPS+LBS positioning
- C. Real-time tracking, Historical track
- D. GPRS / SMS remote control
- E. Power failure alarm, Displacement alarm, Shake alert, Geo-fence
- F. Dual USB interface output, smart fast charge
- G. Car charger camouflage, work silently and without light



Product Parameter

Specification	Parameter
Size	82.9*49.5*36mm
Weight	40g
Frequency Bands	LTE-FDD B1/B2/B3/B4/B5/B7/B8/B28/B66 GSM/GPRS/EDGE 850/900/1800/1900MHz
Operating Voltage	12V-48V DC
USB Output	5V=2.1A×2 (MAX:4.8A)
Positioning	Beidou+GPS+LBS
Position Error	<5m
Receiver sensitivity	-107dB
Tracking sensitivity	-162 dbm
Maximum Frequency Error	±0.1ppm
Time To First Fix	Cold start: An average of 32 sec
Dynamic output range	-15~-108dbm
Communication mode	TCP
Cold start	-145 dbm
Warm start	-156 dbm
Operating temperature range	-20°C to +60°C
Storage temperature	-20°C to +70°C
Maximum Output Power	EGSM900:33dBm±2dB/5dBm±5dB
Geo-fence	TDB



深圳市到位科技有限公司

SHENZHEN DAOVAY TECHNOLOGY

Tel: 400-015-1656

E-mail: xiaohai@daovay.com

Website: www.daovay.com